



712H001005 | OUR-FAVORITE
CHARISMA-ET EX-91

840003146864329 99%RHA-I aAa: 234165 A2A2 BB
 TR TP TC TY TV TL TD FREE OF ALL HAPLOTYPES IMPACTING FERTILITY

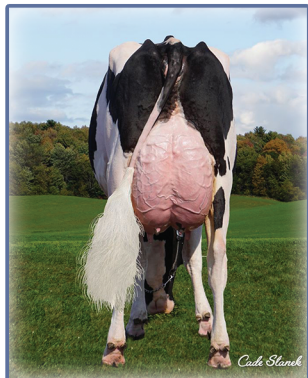


BRED AND OWNED BY: **Our Favorite Holsteins**
 Home of the Melvina Cow Family



DAUGHTERS (L-R): OLMAR CHARISMA BOLOXIE EX-90

- Owned by: Joshua Nelson
- OLMAR CHARISMA COTTONELLE VG-87**
Bred & Owned by: Olmar Farms
- SAVAGE-LEIGH CHARISMA BETTY EX-91**
Owned by: Ruben Schaapman and Austin Yoder
- MS ESKDALE CHARISMA LOLITA VG-88**
Bred & Owned by: Lola Rae Syndicate



Dam: OUR-FAVORITE
 COMPELLING-ET VG-88

SIRE: WOODCREST KING DOC EX-90
DAM: OUR-FAVORITE COMPELLING-ET VG-88
Sired By: COOKIECUTTER HANG-TIME-ET
 1-11 2X 365d 27,580 5.0%F 1,389 3.7%P 1,019

2ND DAM: OUR-FAVORITE UNLIMITED EX-94 3E
Sired By: MAPLE-DOWNS-I G W ATWOOD-ET
 8-01 2X 365d 34,020 4.5%F 1,539 3.5%P 1,190
 Lifetime: 2,206d 181,200 4.7%F 8,431 3.6%P 6,537

3RD DAM: OUR-FAVORITE OBVIOUS-ET EX-93 2E
Sired By: PICSTON SHOTTLE-ET
 6-05 2X 365d 38,110 4.2%F 1,608 3.2%P 1,208
 Lifetime: 1,952d 178,630 4.3%F 7,684 3.4%P 6,107

4TH-10TH Dams VG or EX

4/24 CDCB		
GTPI®	+2543	91%R
Net Merit \$	+330	84%R

4/24 HAUSA			Dtrs: 72 Herds: 40	
PTA Type	+3.38	92%R		
Udder Composite	+2.41			
Feet & Leg Composite	+1.55			

			-3	-2	-1	1	2	3
Stature	3.17	Tall						
Strength	1.52	Strong						
Body Depth	2.45	Deep						
Dairy Form	4.02	Open						
Rump Angle	-2.05	HighPins						
Rump Width	2.10	Wide						
Rear Legs-Side View	1.67	Curved						
Rear Legs-Rear View	1.82	Straight						
Foot Angle	2.49	Steep						
Feet & Legs Score	2.23	High						
Fore Udder Attachment	2.80	Strong						
Rear Udder Height	3.67	High						
Rear Udder Width	4.20	Wide						
Udder Cleft	2.42	Strong						
Udder Depth	1.73	Shallow						
Front Teat Placement	1.54	Close						
Rear Teat Placement	2.33	Close						
Teat Length	-0.30	Short						

HEALTH & FERTILITY		CALVING TRAITS		PRODUCTION Dtrs: 106 Herds: 58		
Somatic Cell Score	3.17	Sire Calving Ease	3.2%	Milk	854	93%R
Productive Life	0.4	Daughter Calving Ease	2.6%	Fat (lbs/%)	51	0.06%
Heifer Livability	0.6	Sire Stillbirth	7.1%	Protein (lbs/%)	35	0.03%
Cow Livability	-1.8	Daughter Stillbirth	7.2%	Feed Efficiency	124	
Dtr Preg Rate	-2.4	Gestation Length	1.2	Feed Saved	-144	
Hfr Conception Rate	0.8	Early First Calving	1.2	Cheese Merit \$	332	
Cow Conception Rate	-2.0					
Fertility Index	-1.7					

"CHARISMA is an all-around bull with high type that should fit into a lot of breeding programs."
 — Todd Stanek, Our-Favorite Holsteins, Fall Creek, WI